

Ion-sculpting of nanopores in amorphous metals, semiconductors, and insulators

H. Bola George,¹ David P. Hoogerheide,² Charbel S. Madi,¹ David C. Bell,^{1,3} Jene A. Golovchenko,^{1,2} and Michael J. Aziz^{1,a)}

¹Harvard School of Engineering and Applied Sciences, Cambridge, Massachusetts 02138, USA

²Department of Physics, Harvard University, Cambridge, Massachusetts 02138, USA

³Center for Nanoscale Systems, Harvard University, Cambridge, Massachusetts 02138, USA

(Received 17 March 2010; accepted 7 May 2010; published online 1 July 2010)

We report the closure of nanopores to single-digit nanometer dimensions by ion sculpting in a range of amorphous materials including insulators (SiO₂ and SiN), semiconductors (*a*-Si), and metallic glasses (Pd₈₀Si₂₀)—the building blocks of a single-digit nanometer electronic device. Ion irradiation of nanopores in crystalline materials (Pt and Ag) does not cause nanopore closure. Ion irradiation of *c*-Si pores below 100 °C and above 600 °C, straddling the amorphous-crystalline dynamic transition temperature, yields closure at the lower temperature but no mass transport at the higher temperature. Ion beam nanosculpting appears to be restricted to materials that either are or become amorphous during ion irradiation. © 2010 American Institute of Physics. [doi:10.1063/1.3441406]

The use of ion beams is an attractive method for the manipulation of solid morphologies with control possible at molecular dimensions. Examples include ion beam nanosculpting—the ion-induced reduction in nanopore diameter to single-digit nanometer dimensions—in insulators,¹ as well as nanoscale self-organized pattern formation² in different materials classes as follows: metals,³ semiconductors,^{4–8} and insulators^{9,10} with lateral length scales now reaching¹⁰ 7 nm. Control of these three materials classes simultaneously at single-digit nanometer scales could enable broadly configurable, sublithographic device fabrication; for example, complex devices assembled from semiconductors, metals, and insulators with ~100 nm dimensions might be shrunk down to molecular dimensions by spatially uniform ion beam irradiation. The integration of nanopores into single biomolecule detecting devices has permitted the measurement of the folding conformations of individual biomolecules¹¹ and, ultimately, holds promise for rapid DNA sequencing.

In this letter, we report the use of ion beam nanosculpting to close individual nanopores to single-digit nanometer dimensions in the three materials classes used for the typical electronic device. The materials exhibiting nanopore closure are all amorphous; *a*-Si (semiconductor), SiO₂ and SiN_x (insulator), and Pd₈₀Si₂₀ (metallic glass) or rapidly become amorphous upon the initiation of ion irradiation (*c*-Si, held at temperature $T < 100$ °C). Our results showing that the sculpting effect is limited to amorphous materials are predicted by an irradiation-induced anisotropic deformation mechanism that occurs only in amorphous materials.^{12,13}

Samples were prepared as follows, unless stated otherwise as follows: (1) fabrication of 50 × 50 μm² free-standing membranes by a series of photolithography and wet etching steps, (2) milling of pores in the free-standing membranes using a 50 keV Ga²⁺ focused ion beam (FIB) machine, and (3) low energy argon irradiation.

For the nitride experiments, the samples used were 200-nm-thick low-pressure chemical vapor deposition (LPCVD)

grown nonstoichiometric SiN_x/Si(001) substrate.

For the oxide studies, the samples used were 200-nm-thick LPCVD-grown SiN_x/500-nm-thick thermally grown SiO₂/Si(001). After membrane fabrication, the topmost 200-nm-thick SiN_x capping layer was dissolved in hot H₃PO₄ to expose the oxide surface, prior to pore milling.

The free-standing oxide membranes were the starting point for the fabrication of the amorphous Si (*a*-Si), palladium silicide (Pd₈₀Si₂₀), Pt, and Ag samples. For *a*-Si, we milled ~700 nm diameter pores in oxide membranes prior to *a*-Si deposition. We subsequently deposited ~250 nm *a*-Si at 0.025 nm s⁻¹ using an rf magnetron sputter deposition chamber with a base pressure of 7.7 × 10⁻⁷ Torr. For the Pd₈₀Si₂₀ pores, we milled ~350 nm diameter holes in the SiO₂ membranes prior to deposition of ~650 nm amorphous Pd₈₀Si₂₀ at 0.07 nm s⁻¹ using an ion sputter deposition system with a base pressure of 8.3 × 10⁻⁷ Torr. FIB milling of pores in the oxide membranes prior to deposition of either *a*-Si or Pd₈₀Si₂₀ was undertaken to reduce potential of Ga contamination from the FIB milling step. For Pt and Ag, we deposited 120 and 350 nm on the oxide membranes using electron beam and thermal sources, respectively. No special precautions were taken to keep the samples cool during ambient temperature deposition.

For the experiments on crystalline silicon (*c*-Si), we employed 260 nm Si/1 μm SiO₂/625 μm Si substrates supplied by Silicon on Insulator Technologies. We deposited ~300 nm of SiN_x by LPCVD prior to membrane fabrication using photolithography and wet etching steps. Again the topmost SiN_x capping layer was dissolved by immersion in hot H₃PO₄ prior to FIB milling of pores.

The ion sculpting apparatus has been described in detail elsewhere;^{1,14} typical parameters included operation of the Kaufmann-source Ar⁺ ion beam at 3 keV in continuous mode at normal incidence, chamber base pressure <10⁻⁷ Torr, and differentially pumped Ar flowing into the chamber at 2.0 × 10⁻⁶ mbar. Feedback-controlled counting of the Ar⁺ ions going through the pore in real-time, and knowledge of the initial size from transmission electron microscopy (TEM), allow the determination of the pore area in real time as it

^{a)}Author to whom correspondence should be addressed. Electronic mail: maziz@harvard.edu.

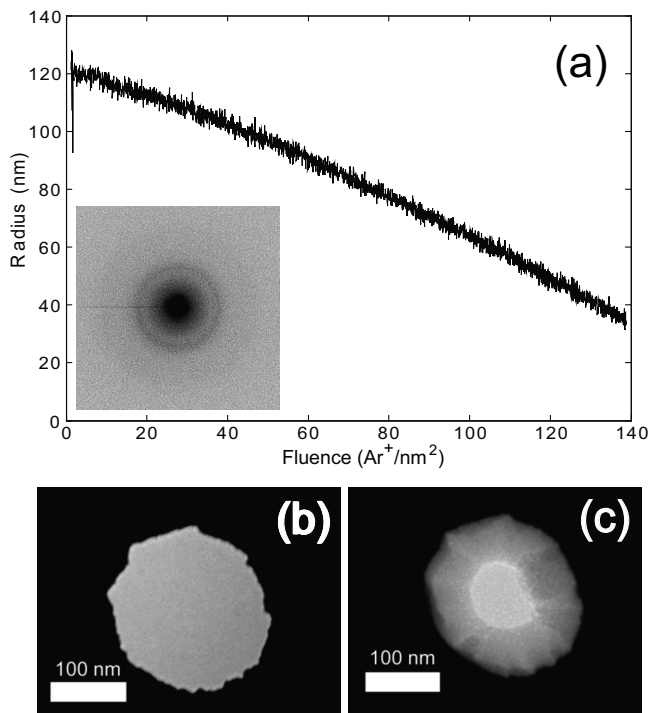


FIG. 1. (a) Real-time fluence dependence of a $\text{Pd}_{80}\text{Si}_{20}$ pore radius during ion sculpting with 3 keV Ar^+ at ambient temperature under ion flux of $0.053\text{Ar}^+ \text{nm}^{-2} \text{s}^{-1}$. The inset shows, in an inverted gray scale, a diffraction ring from the closed-in region of the sputtered sample confirming its amorphousness. (b) and (c) are TEM images of the pore in (a) before and after ion irradiation, respectively.

evolves during sculpting. Temperature control is achieved to within 1°C using LN_2 refrigeration and a local resistive heater.

TEM imaging and diffraction of PdSi pores were performed in a JEOL 100CX2 TEM operating at 60 kV and a field emission JEOL 2010 TEM operating at 200 kV, respectively. For the a -Si pores, to prevent hydrocarbon surface contamination from accumulating in the pores during TEM imaging and being confused with closure by the accretion of silicon, special precautions were required. We kept the pre(post)-ion-irradiated c -Si pores in a clean nitrogen environment and exposed them to the atmosphere only for as long as it took for them to be transferred to the irradiation chamber (TEM). TEM imaging and diffraction of the a -Si pores were performed using a JEOL 2100 TEM operating in a vacuum of 4.5×10^{-6} mbar at a reduced voltage of 120 kV to remain below the radiation damage threshold for Si,¹⁵ nominally 145 keV and presumed to be somewhat lower for a -Si.

Typical results for pore area versus fluence during ion sculpting are shown in Fig. 1(a). TEM micrographs of a $\text{Pd}_{80}\text{Si}_{20}$ pore before and after irradiation are shown in Figs. 1(b) and 1(c), respectively. The broad diffraction rings from an irradiated area establish the amorphous structure of the $\text{Pd}_{80}\text{Si}_{20}$ sample, as shown in the inset of Fig. 1(a).

We observe the sculpting effect in different amorphous materials including SiO_2 , SiN_x , $\text{Pd}_{80}\text{Si}_{20}$, and a -Si but not in polycrystalline thin films of Pt or Ag deposited on SiO_2 thin film substrates. This observation suggests that nanopore closure is limited to amorphous materials.

That amorphousness is a necessary condition for pore closing is supported by the results of irradiation of c -Si in a separate system capable of wide temperature excursions. For this experiment, irradiation was performed in an ultrahigh

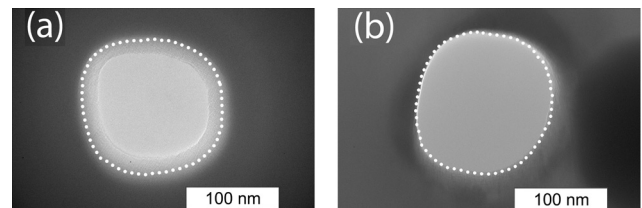


FIG. 2. TEM images of c -Si pores after 1.2 keV Ar^+ normal-incidence irradiation (a) $T < 100^\circ\text{C}$, surface becomes amorphous; and (b) $T > 600^\circ\text{C}$, surface remains crystalline. Initial pore perimeters are indicated by the dotted white contours. Irradiation above the dynamic a - c transition temperature preserves the crystallinity of the c -Si pore during irradiation and results in undetectable mass accretion at the pore edge. The ion flux was $22.5\text{Ar}^+ \text{nm}^{-2} \text{s}^{-1}$ with a total dose of (a) $1580\text{Ar}^+ \text{nm}^{-2}$ and (b) $3040\text{Ar}^+ \text{nm}^{-2}$. A third pore (not shown) was closed completely with a total fluence of $5400\text{Ar}^+ \text{nm}^{-2}$ below the a - c transition. The accreted material in (a) and in the completely closed pore was confirmed to be amorphous by TEM diffraction.

vacuum chamber (base pressure = 7×10^{-11} Torr at ambient T) with a 3 cm rf ion source (Veeco, Fort Collins, CO). Sample heating without fine temperature control to above 600°C , a temperature at which the surface remains crystalline under ion bombardment, was achieved with a pyrolytic boron nitride heater (GE Advanced Ceramics, Cleveland, OH). The results are shown in Fig. 2 as follows: irradiation of c -Si pores at $T < 100^\circ\text{C}$ resulted in substantial closure, whereas irradiation under otherwise identical conditions but at $T > 600^\circ\text{C}$ resulted in undetectable closure.

Studies of c -Si following ~ 1 keV Ar^+ irradiation at room T have established that a surface layer of thickness roughly (range + standard deviation) becomes amorphous.¹⁶ At high enough T , however, amorphous pockets created by the impinging ions are healed by thermally activated processes before a subsequent overlapping ion impingement arrives, and the crystalline structure is preserved. Amorphization and crystallization rates, and the direction of motion of the a - c interface, critically depend on T and ion mass, energy, and flux.¹⁷⁻²¹ The dynamic a - c transition temperature is that at which both rates are equal. We estimate this to be $\sim 540^\circ\text{C}$ for Si under the present irradiation conditions. Earlier studies at ambient T have established that very low ion fluences ($\sim 10^{14} \text{Ar}^+ \text{cm}^{-2}$) are required to amorphize surfaces;²² thus, for our fluences ($\sim 10^{17} \text{Ar}^+ \text{cm}^{-2}$), below 100°C we expect the c -Si pores to develop steady-state amorphous surface layers essentially as soon as irradiation begins. Furthermore, above 600°C , we expect the c -Si surfaces to remain crystalline during irradiation.

These observations are consistent with the anisotropic deformation mechanism that occurs in amorphous, but not crystalline, materials.²³⁻²⁶ Studies involving mega-electron-volt irradiation of amorphous/crystalline metallic glass multilayers showed deformation only in amorphous regions.^{27,28} Furthermore, the thermal-spike mechanism of anisotropic heating from electronic stopping, flow, and quenching,¹² is applicable only to amorphous materials. The experimental observations have been quantified in one-dimensional²⁴ and three-dimensional²⁶ using phenomenological stress- and strain-generation models, respectively. Subsequent results from low-energy ion irradiation experiments of nitride membranes using 30 keV Ga^{2+} have been shown²⁹ to be consistent with the same constitutive relations as those developed to describe mega-electron-volt irradiation effects, despite the dominance of nuclear stopping at low energy.

Recently, these ideas have been extended to develop the anisotropic deformation and viscous flow model that accounts reasonably well for closure in *a*-Si pores under 3 keV Ar⁺ irradiation.¹³ In this model, compressive in-plane stress generated during ion irradiation by anisotropic deformation is relieved within a concurrently formed thin viscous surface layer exhibiting radiation-enhanced fluidity; the resulting flow of the amorphous viscous layer into the pore causes closure. A competing model of adatom diffusion has also been shown to account for various features of the closure of SiN_x pores under ion irradiation, including a flux pulsing effect and a temperature regime where pore closing rates are strongly *T*-dependent.¹ On the one hand, the adatom diffusion model does not predict pore closure in amorphous, but not crystalline, materials, because mobile species should—at least in principle—exist on both crystalline and amorphous surfaces. The observation of pore closure in amorphous but not crystalline materials does not rule out the possibility of adatom diffusion being the dominant mechanism here; it is possible that the product of the adatom concentration and diffusivity on the crystalline surface is simply too small numerically compared to the amorphous surface but we know of no reason to expect this to be a likely explanation. On the other hand, the flux-pulsing effect is not inconsistent with all plausible constitutive relations for ion-enhanced fluidity within the anisotropic deformation and viscous flow model; it has been argued¹³ to be inconsistent merely with the widely used constitutive relation in which the fluidity is strictly proportional to the instantaneous flux. If there is a unique mechanism at play in all the ion beam-stimulated nanopore closure experiments, its nature remains unsettled.

Fabrication of many electronic devices relies on the integration of insulators, metals, and semiconductors. An understanding of morphology evolution under ion irradiation and the ability to shrink features such as nanopores in these three essential materials classes in a controllable fashion could open an entirely different fabrication route to nanoscale devices. Multicomponent devices fabricated at small but lithographically tractable scales could be further shrunk down to molecular dimensions via uniform ion irradiation. The integrity of the device would need to be maintained during shrinkage—this is no small challenge but might be possible with self-organization or feedback-control. In principle, because the nanopore closure rate for each material is a function of the ion species, energy, flux, and flux duty cycle, nanopores in three distinct materials should close at identical rates under identical irradiation conditions under a nonvanishing set of conditions.

In summary, ion irradiation induced pore closure has been demonstrated in amorphous SiN, SiO₂, Si, and Pd₈₀Si₂₀ nanopores and in crystalline Si nanopores that rapidly amorphize under ion irradiation but not in polycrystalline Pt or Ag. This closing effect appears to be limited to materials that are or become amorphous, and is predicted by the mechanism of ion induced anisotropic deformation and viscous flow. At *T* > 600 °C, above the amorphous-crystalline dynamic transition temperature where the *c*-Si surface is expected to be hot enough to remain crystalline, we observed no significant closure, whereas under 100 °C, where the surface rapidly amorphizes under irradiation, we observe sig-

nificant closure. These findings open opportunities for the integration of insulators, metals, and semiconductors into nanoelectronic devices at sublithographic length scales.

We acknowledge assistance from S. Garaj, V. Ramaswamy, J. J. Vlassak, C.-Y. Wen, and X. Wang, M.J.A. is grateful to U. Valbusa, F. Buatier de Mongeot, and B. Torre for hospitality in a sabbatical-leave collaboration on preliminary experiments that failed to close nanopores in crystalline materials; finally we understand why. This work was supported by the U.S. DOE through DE-FG02-06ER46335. D.P.H. acknowledges support from NDSEG and NSF Graduate fellowships. This work was performed in part at the Center for Nanoscale Systems at Harvard University member of the National Nanotechnology Infrastructure Network, which is supported by the NSF under ECS-0335765.

- ¹J. Li, D. Stein, C. McMullan, D. Branton, M. J. Aziz, and J. Golovchenko, *Nature (London)* **412**, 166 (2001).
- ²W. L. Chan and E. Chason, *J. Appl. Phys.* **101**, 121301 (2007).
- ³W. L. Chan and E. Chason, *Phys. Rev. B* **72**, 165418 (2005).
- ⁴S. Facsko, T. Dekorsy, C. Koerdt, C. Trappe, H. Kurz, A. Vogt, and H. L. Hartnagel, *Science* **285**, 1551 (1999).
- ⁵C. S. Madi, B. Davidovitch, H. B. George, S. A. Norris, M. P. Brenner, and M. J. Aziz, *Phys. Rev. Lett.* **101**, 246102 (2008).
- ⁶J. Erlebacher, M. Aziz, E. Chason, M. Sinclair, and J. Floro, *Phys. Rev. Lett.* **82**, 2330 (1999).
- ⁷B. Ziberi, F. Frost, and B. Rauschenbach, *J. Vac. Sci. Technol. A* **24**, 1344 (2006).
- ⁸Q. Wei, J. Lian, W. Lu, and L. Wang, *Phys. Rev. Lett.* **100**, 076103 (2008).
- ⁹C. C. Umbach, R. L. Headrick, and K. C. Chang, *Phys. Rev. Lett.* **87**, 246104 (2001).
- ¹⁰Q. Wei, J. Lian, S. Zhu, W. Li, K. Sun, and L. Wang, *Chem. Phys. Lett.* **452**, 124 (2008).
- ¹¹J. Li, M. Gershow, D. Stein, E. Brandin, and J. A. Golovchenko, *Nature Mater.* **2**, 611 (2003).
- ¹²T. van Dillen, A. Polman, P. R. Onck, and E. van der Giessen, *Phys. Rev. B* **71**, 024103 (2005).
- ¹³H. B. George, Y. Tang, X. Chen, J. Li, J. W. Hutchinson, J. A. Golovchenko, and M. J. Aziz, "Nanopore fabrication in amorphous Si: viscous flow model and comparison to experiment," *J. App. Phys.* (in press).
- ¹⁴D. M. Stein, C. J. McMullan, J. L. Li, and J. A. Golovchenko, *Rev. Sci. Instrum.* **75**, 900 (2004).
- ¹⁵G. G. George and P. R. C. Stevens, *Nucl. Instrum. Methods* **43**, 278 (1966).
- ¹⁶C. S. Madi, personal communication.
- ¹⁷K. A. Jackson, *J. Mater. Res.* **3**, 1218 (1988).
- ¹⁸A. Battaglia, F. Priolo, and E. Rimini, *Appl. Surf. Sci.* **56–58**, 577 (1992).
- ¹⁹L. A. Marqués, L. Pelaz, M. Aboy, L. Enriquez, and J. Barbolla, *Phys. Rev. Lett.* **91**, 135504 (2003).
- ²⁰L. Pelaz, L. A. Marqués, and J. Barbolla, *J. Appl. Phys.* **96**, 5947 (2004).
- ²¹L. Pelaz, L. A. Marqués, P. Lopez, L. Santos, M. Aboy, and J. Barbolla, *Nucl. Instrum. Methods Phys. Res. B* **241**, 501 (2005).
- ²²W. Bock, H. Gnaser, and H. Oechsner, *Surf. Sci.* **282**, 333 (1993).
- ²³C. A. Volkert, *J. Appl. Phys.* **70**, 3521 (1991).
- ²⁴M. L. Brongersma, E. Snoeks, and A. Polman, *Appl. Phys. Lett.* **71**, 1628 (1997).
- ²⁵M. L. Brongersma, E. Snoeks, T. van Dillen, and A. Polman, *J. Appl. Phys.* **88**, 59 (2000).
- ²⁶K. Otani, X. Chen, J. W. Hutchinson, J. F. Chervinsky, and M. J. Aziz, *J. Appl. Phys.* **100**, 023535 (2006).
- ²⁷F. Garrido, A. Benyagoub, A. Chamberod, J. C. Dran, A. Dunlop, S. Klaumunzer, and L. Thome, *Phys. Rev. B* **52**, 6273 (1995).
- ²⁸F. Garrido, A. Benyagoub, A. Chamberod, J. C. Dran, A. Dunlop, S. Klaumunzer, and L. Thome, *Nucl. Instrum. Methods Phys. Res. B* **115**, 430 (1996).
- ²⁹Y.-R. Kim, P. Chen, M. J. Aziz, D. Branton, and J. J. Vlassak, *J. Appl. Phys.* **100**, 104322 (2006).